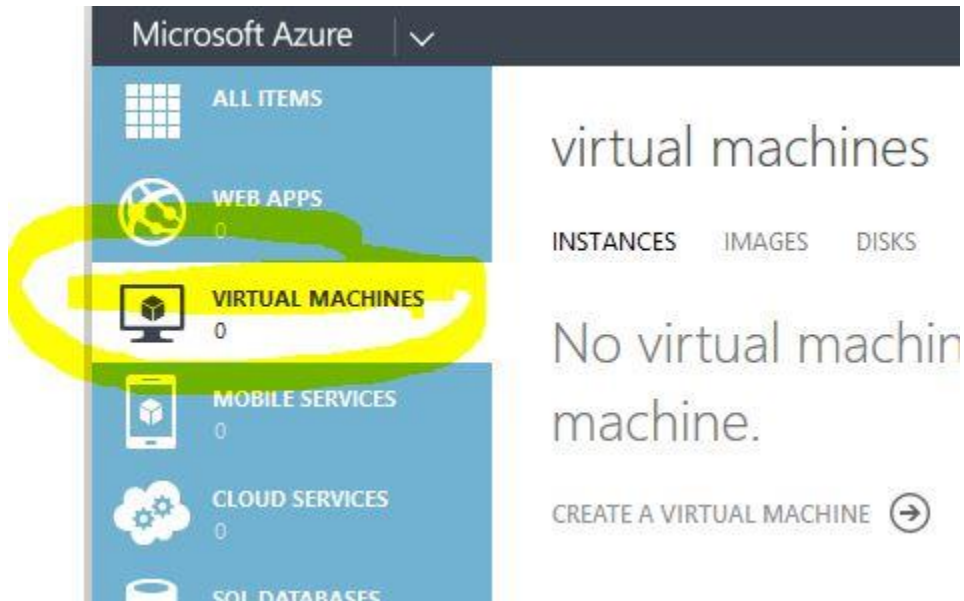
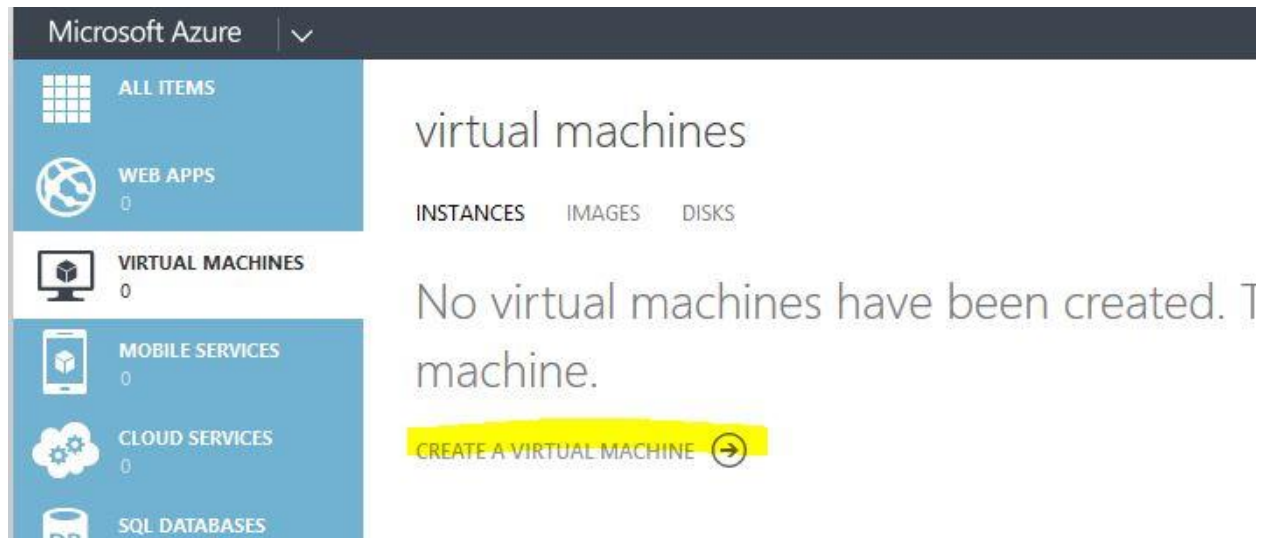


## CMP400 Setup Guide

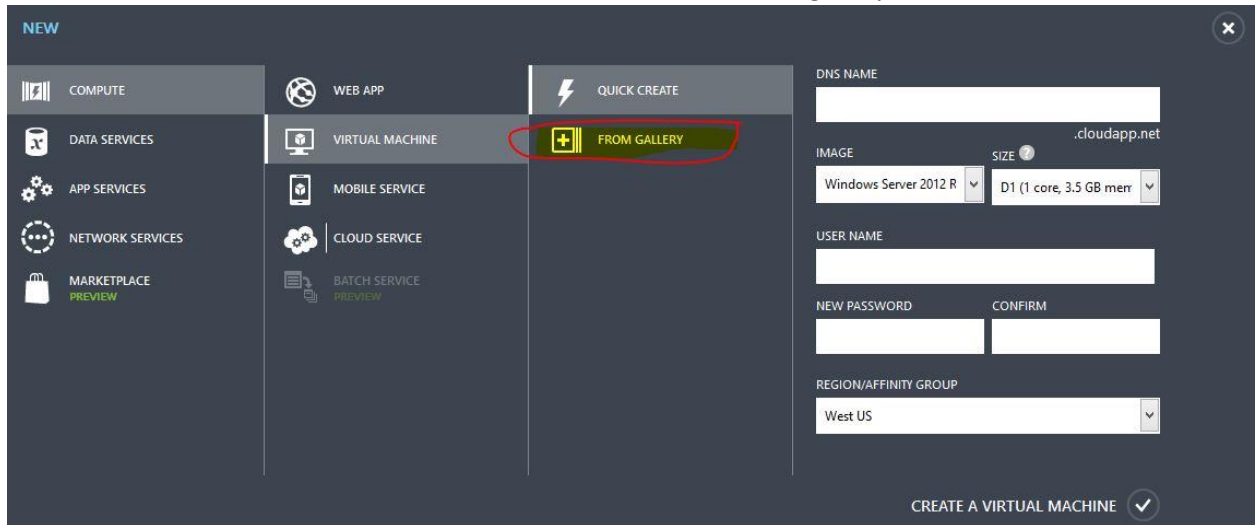
1. Sign in to Azure using the sign in link below with your single sign on Charter username and password:
  - a. <https://login.microsoftonline.com/login.srf?wa=wsignin1.0&rpsnv=4&ct=1420131930&ver=6.5.6509.0&wp=MBI&wreply=https:%2F%2Ffea.windowsazure.com%2F%2Fsignin%3Fwhr%3Dchartercollege.edu%26returnurl%3D&lc=1033&id=501155&whr=chartercollege.edu&cbcxt=waep>
2. Click on Virtual Machines on the left side:



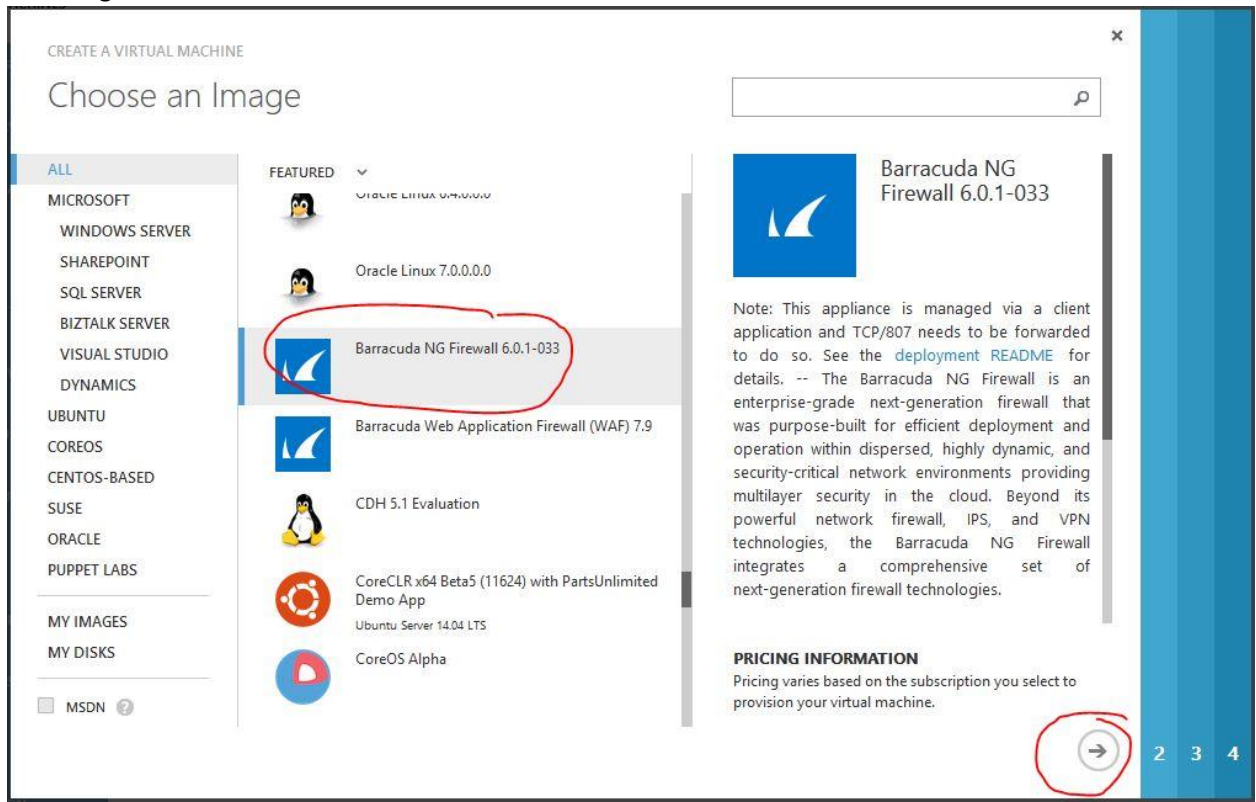
3. Click on Create Virtual Machine:



4. Leave the first two columns as is and in the 3<sup>rd</sup> column, select from gallery



5. In the middle column, scroll down to Barracuda NG Firewall 6.01-033 and click the arrow in the lower right hand corner.



6. Type in unique virtual machine name. Change the size to A2, leave the user name as is, and select provide a password. Deselect upload compatible SSH key for authentication. For easy

passwords use Ch@rter1. Click the arrow in the lower right hand corner.

CREATE A VIRTUAL MACHINE

## Virtual machine configuration

VIRTUAL MACHINE NAME <sup>?</sup>  
student1

TIER  
BASIC STANDARD

SIZE <sup>?</sup>  
A2 (2 cores, 3.5 GB memory)

NEW USER NAME  
azureuser

AUTHENTICATION <sup>?</sup>  
 UPLOAD COMPATIBLE SSH KEY FOR AUTHENTICATION  
 PROVIDE A PASSWORD

NEW PASSWORD  CONFIRM  ✓

**Barracuda NG Firewall**  
6.0.1-033

Note: This appliance is managed via a client application and TCP/807 needs to be forwarded to do so. See the [deployment README](#) for details. -- The Barracuda NG Firewall is an enterprise-grade next-generation firewall that was purpose-built for efficient deployment and operation within dispersed, highly dynamic, and security-critical network environments providing multilayer security in the cloud. Beyond its powerful network firewall, IPS, and VPN technologies, the Barracuda NG Firewall integrates a comprehensive set of next-generation firewall technologies.

**PRICING INFORMATION**  
Pricing varies based on the subscription you select to provision your virtual machine.

1

← →

7. If you click the next button and you get a red exclamation mark on the cloud dns service name, create a new name.

CLOUD SERVICE <sup>?</sup>  
Create a new cloud service

CLOUD SERVICE DNS NAME  
student1 ! .cloudapp.net

REGION/AFFINITY GROUP/VIRTUAL NETWORK <sup>?</sup>

8. The green checkmark indicates it is okay to continue.

CLOUD SERVICE <sup>?</sup>  
Create a new cloud service

CLOUD SERVICE DNS NAME  
student100 ✓ .cloudapp.net

REGION/AFFINITY GROUP/VIRTUAL NETWORK <sup>?</sup>

9. Change the Region/Affinity Group/Virtual network to Charter1.

CREATE A VIRTUAL MACHINE

## Virtual machine configuration

CLOUD SERVICE <sup>?</sup>

Create a new cloud service

CLOUD SERVICE DNS NAME

student100 .cloudapp.net

REGION/AFFINITY GROUP/VIRTUAL NETWORK <sup>?</sup>

Charter1

VIRTUAL NETWORK SUBNETS

Subnet-1(10.0.0.0/11)

STORAGE ACCOUNT

---

10. At the bottom in the endpoints section, create NGAdminTCP . There is no selection so you will need to type it in. Choose protocol TCP and type in the two port boxes 807. Click the next arrow

at the bottom.

CREATE A VIRTUAL MACHINE

## Virtual machine configuration

VIRTUAL NETWORK SUBNETS

Subnet-1(10.0.0/11)

STORAGE ACCOUNT

Use an automatically generated storage account

AVAILABILITY SET

(None)

ENDPOINTS

NAME	PROTOCOL	PUBLIC PORT	PRIVATE PORT
SSH	TCP	22	22
NGAdminTCP	TCP	807	807
ENTER OR SELECT A VALUE			

**Barracuda NG Firewall 6.0.1-033**

Note: This appliance is managed via a client application and TCP/807 needs to be forwarded to do so. See the [deployment README](#) for details. -- The Barracuda NG Firewall is an enterprise-grade next-generation firewall that was purpose-built for efficient deployment and operation within dispersed, highly dynamic, and security-critical network environments providing multilayer security in the cloud. Beyond its powerful network firewall, IPS, and VPN technologies, the Barracuda NG Firewall integrates a comprehensive set of next-generation firewall technologies.

**PRICING INFORMATION**

Pricing varies based on the subscription you select to provision your virtual machine.

1 2 4

11. On the final page, select the checkmark in the lower right hand corner.

CREATE A VIRTUAL MACHINE

## Virtual machine configuration

VM AGENT

Install the VM Agent

CONFIGURATION EXTENSIONS

Configuration extensions aren't available yet for this image.

**Barracuda NG Firewall 6.0.1-033**

Note: This appliance is managed via a client application and TCP/807 needs to be forwarded to do so. See the [deployment README](#) for details. -- The Barracuda NG Firewall is an enterprise-grade next-generation firewall that was purpose-built for efficient deployment and operation within dispersed, highly dynamic, and security-critical network environments providing multilayer security in the cloud. Beyond its powerful network firewall, IPS, and VPN technologies, the Barracuda NG Firewall integrates a comprehensive set of next-generation firewall technologies.

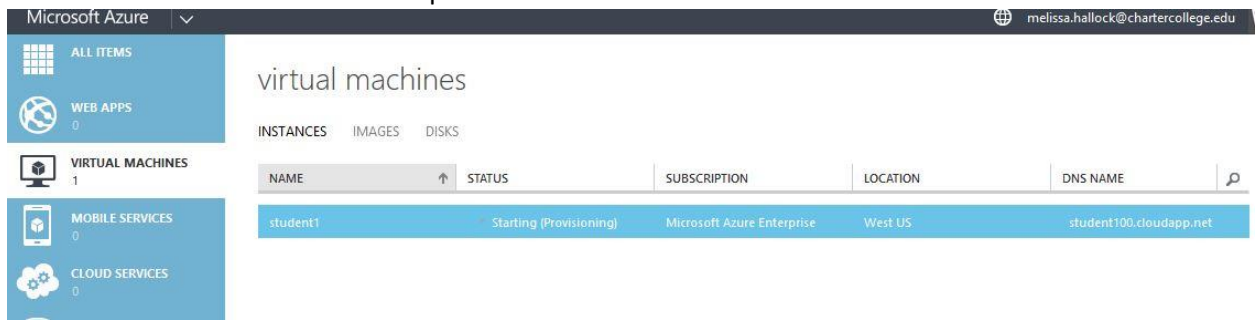
**PRICING INFORMATION**

Pricing varies based on the subscription you select to provision your virtual machine.

1 2 3

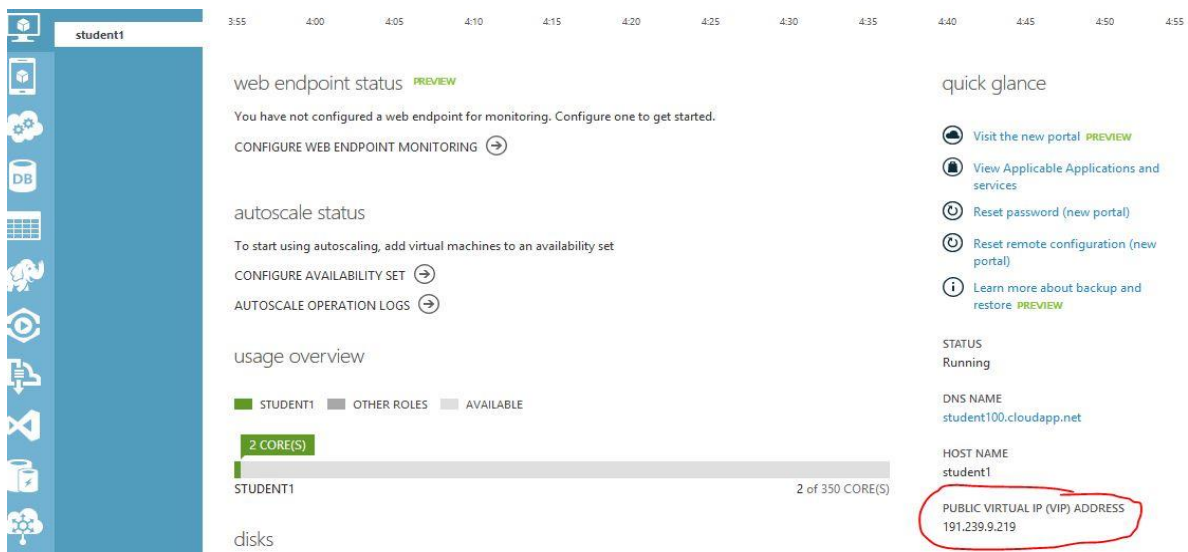


12. Wait on the virtual machine to complete.



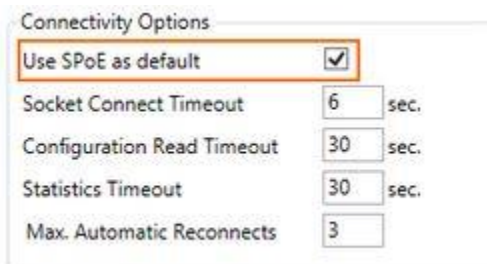
13. Once the virtual machine is created, you can install the Barracuda license. It is recommended to keep an Excel spreadsheet with a list of assigned virtual machines, their license, and their IP connection address so the students can connect because sometimes the virtual machine quits working. In this event, just delete the old one, create a new one, and send the new IP to students. Let students know this is a known issue with Azure and to let you know if their connection quits working so you can build them a new machine.

14. Once the virtual machine is created, open it and scroll down to get the IP address for the public external connection.

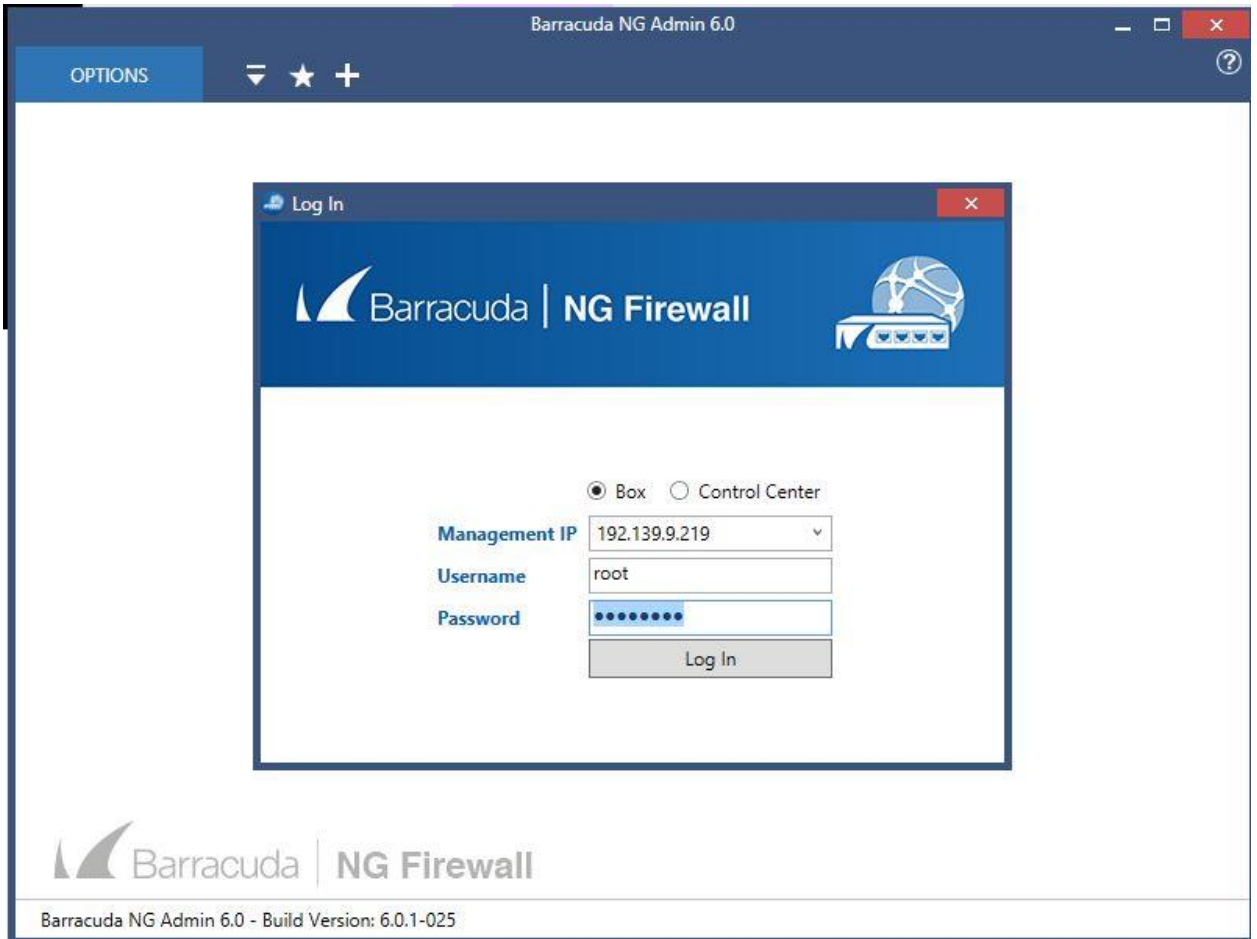


15. Sign out of Azure.

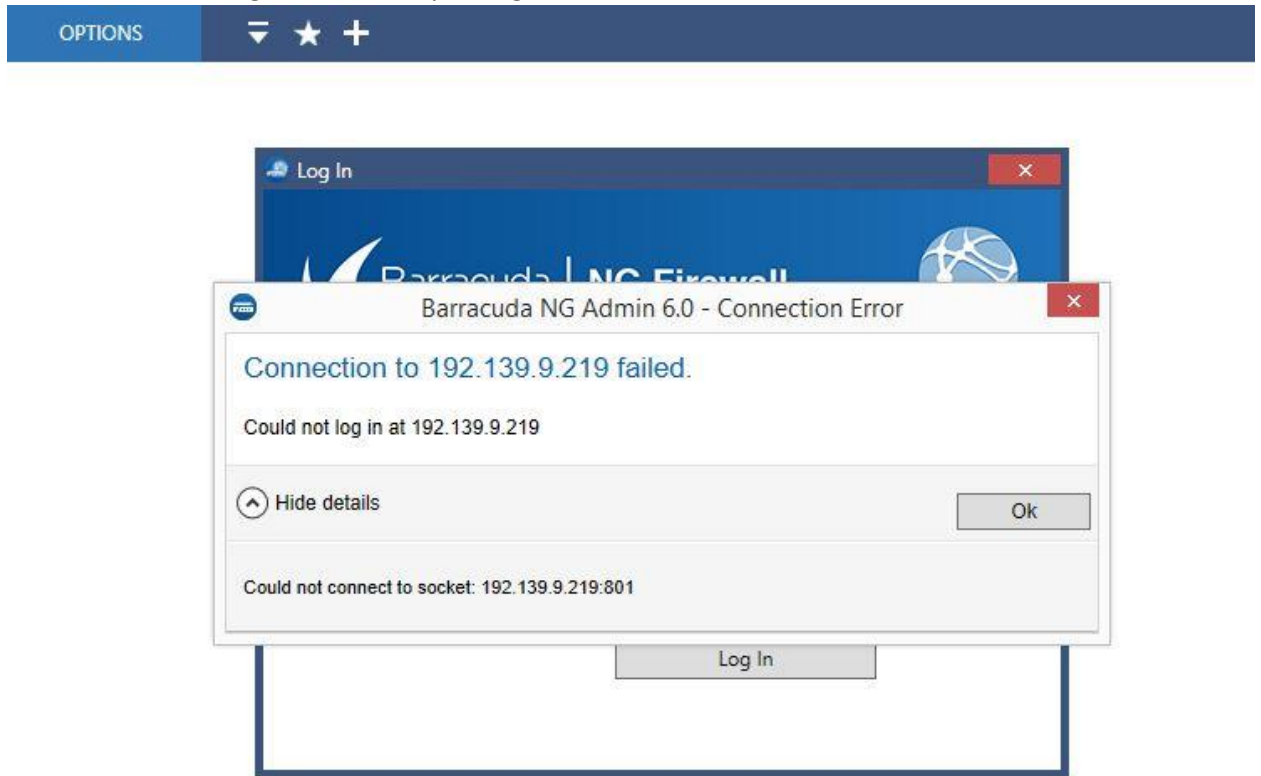
16. In the Client Settings section, verify that the check box for SPoE as default is ticked.



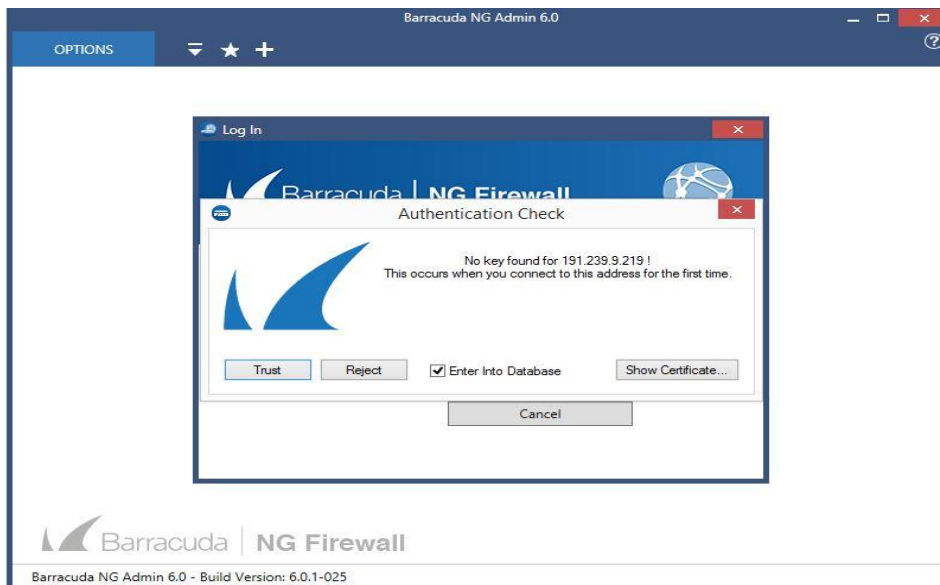
17. Open NGAdmin. In the login, type the public virtual IP address in the management IP area, admin for the user name, and put in the password Ch@rter1.



18. Note: If the student gets this error, you might need to rebuild the virtual machine.



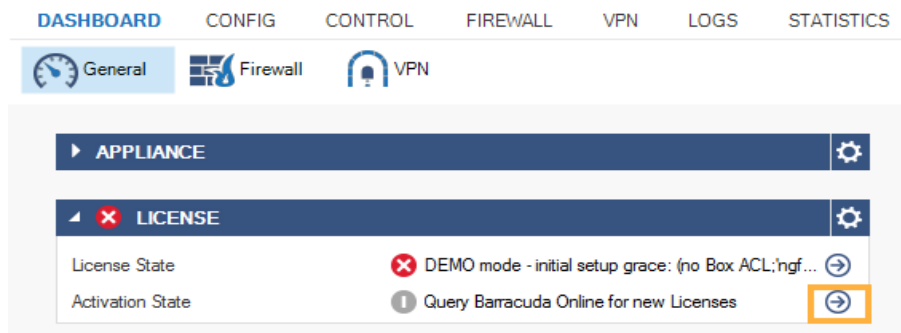
19. When the Barracuda NG Firewall connects, the authentication check dialog box pops up. Click the trust button.



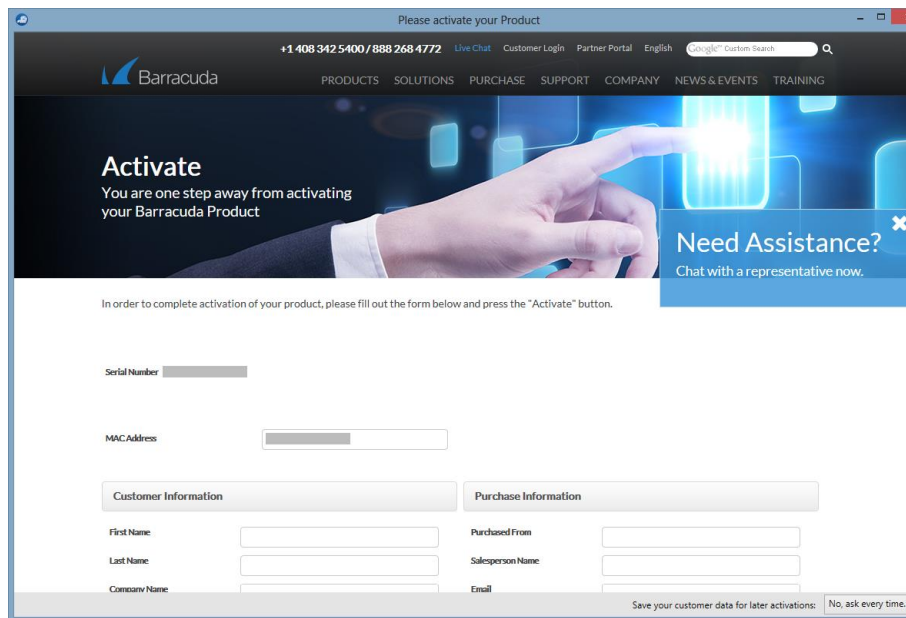
20. The next step is to install the Barracuda licensing once you get the license list from your supervisor. Click on the Dashboard tab. In the License section on the general page, the license



state is displayed as DEMO mode. Click the arrow icon next to the activation state entry and select activate. The product activation window opens.



## 21. Fill out the activation form



22. (optional) Choose the option Save your customer data for later activations

23. Click activate. After the activation process successfully completes, you will receive a notification email from Barracuda Networks.

24. The Barracuda NG Firewall automatically downloads and installs the purchased license. (This does not always work, so be sure to check the license status.)

25. Check the license state on the Dashboard > General page. You can fix it here if you need to. Sometimes it takes a few hours to show also. All done! Now you can send the connection info (IP address, root as user name, and password you created) to all your students via email.